

Photo Controls

Field Installable

Dimensions & Temperature Data

Photo Control Component

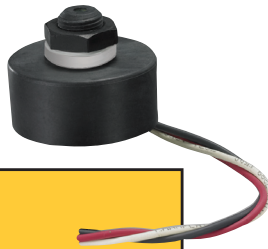


Photo Cell Field Kits For KWP, KF, KFSS Series (400W. Max.)*

CATALOG NUMBER	Volts	Frequency
HUB2PC120FK	120 VAC	50/60 Hz
HUB2PC227FK	208-277 VAC	50/60 Hz
HUB2PC347FK	347 VAC	50/60 Hz

For Harsh NEMA 4X & Class I, Div. 2 Locations*



Factory Sealed

Photo Cell Field Kits with FSBC drilled cover

CATALOG NUMBER	Volts
VMFSPC1	120 VAC
VMFSPC2	208-277 VAC
VMFSPC3	347 VAC

Order FS Back Box Separately

For All Environments

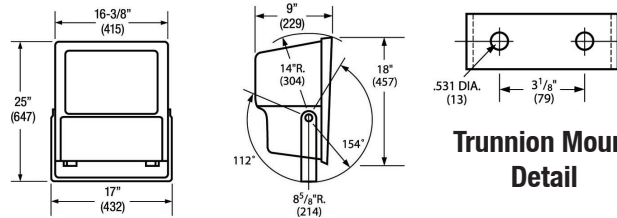


Factory Sealed

Photo Cell Field Kits with HKB-GL box & cover

CATALOG NUMBER	Volts
VMHKPC1	120 VAC
VMHKPC2	208-277 VAC
VMHKPC3	347 VAC

Class I, Div. 1 BCD NEMA 3, 4X
Class II, Div. 1&2, EFG IP66
Class III *40°C ambient T3 Rated



Lamp Type	Wattage & ANSI Code	Ambient °C	Temp. Code CL1, Div. 2	Temp. Code CL1, Zone 2 ExnRⓄ	Supply Wire
HPS	150 S55	40°Ⓞ	T2B	T4	90°C
		55°	—	—	—
HPS	250 S50	40°Ⓞ	325°C	T3	90°C
		55°	—	—	—
HPS	400 S51	40°Ⓞ	360°C	T3	90°C
		55°	—	—	—
HPS	1000 S52	40°	380°C	T2	110°C
		55°	—	—	—
MH	175 M57	40°Ⓞ	350°C	T3	90°C
		55°	—	—	—
MH	250 M58	40°Ⓞ	350°C	T4	90°C
		55°	—	—	—
MH	400 M59	40°Ⓞ	350°C	T3	90°C
		55°	—	—	—
MH	1000 M47	40°	440°C	T2	110°C
		55°	—	—	—
MHP	150 M102	40°	350°C	T3	90°C
		55°	350°C	—	90°C
MHP	175 M137	40°	350°C	T3	90°C
		55°	350°C	—	90°C
MHP	200 M136	40°	350°C	T3	90°C
		55°	350°C	—	90°C
MHP	250 M138	40°	350°C	T3	90°C
		55°	350°C	—	90°C
MHP	320 M132	40°	365°C	T3	90°C
		55°	—	—	—
MHP	350 M131	40°	350°C	T3	90°C
		55°	—	—	—
MHP	400 M135	40°	350°C	T3	90°C
		55°	—	—	—

ⓄOption NR; requires sealed entry

ⓄT-Codes measured @ 40°C; Ⓞ Listed for 25°C operation



KILLARK®

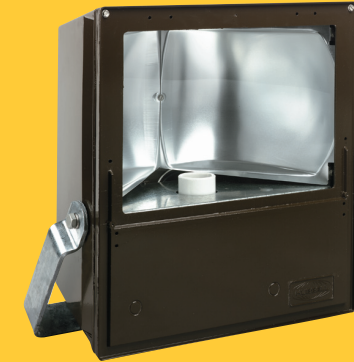
RACO® BELL® KILLARK® HAWKE® CHALMIT®

3940 M.L. King Dr., St. Louis, MO 63113
Tel: 314-531-0460 Fax: 314-531-7164
www.hubbell-killark.com

TF-KF-FLOODS



KILLARK®



KF Series

150 - 1000W HID

Aluminum Floodlights

now with

2009 EISA Compliant
Pulse Start Metal Halide



**Wet, Harsh &
Hazardous Locations**

Distributed by:

KF Series Floodlights

Now With 2009 EISA COMPLIANT Pulse Start Metal Halide Lamps



APPLICATIONS

KF Series floodlights can be used in industrial installations where flammable gases or vapors may exist due to abnormal conditions creating a Class I, Div. 2 hazardous location. Also can be used in harsh and corrosive environments, such as petrochemical facilities, wastewater and sewage treatment plants and marine and coastal areas. Designed for heavy duty applications where long life and maintenance-free service is essential.

FEATURES

- Rugged weathertight housing of copper-free aluminum with corrosion resistant bronze finish
- Wide beam distribution
- Thermal shock, impact-resistant lens
- Continuous silicone gasketing
- All external hardware is corrosion resistant
- NR suffix Restricted Breathing for lower T-codes²
- 3/4" NPT entry on back lower left
- See back panel of brochure for fixture dimensions and mounting accessories

¹ See catalog for certification details, and fixture mounting accessories.

² Add optional suffix NR to catalog number for restricted breathing. See T-codes on back panel of this brochure.

³ Not suitable for submersion or wave impact.

⁴ Consult factory for other available voltages.

⁵ 1000 watt fixture aiming angle limited to 45° - 135° (no straight up or down) 1000 watt fixtures are rated and listed for 40° ambient

⁶ Use Philips C1000S52/ED37 11-1/2" lamp

⁷ Use 11-1/2" BT37 lamp available from GE, Venture or Philips



Class I, Div. 2 Groups A,B,C,D¹
 Class I, Zone 2 Groups IIC,IIB,IIA (nR²)
 Suitable for wet locations
 NEMA 4X, IP66 rated

ABS Type Approval
 (For Shipboard use)³



CATALOG LOGIC

KF P 40 0 -76 NR F1 P1 AS
 1 2 3 4 5 6

1 **KF - Series Constant** (aluminum flood)

2 **Lamp Type**

S = High Pressure Sodium

H = Metal Halide

P = Pulse Start Metal Halide

3 **Wattage**

15 = 150 Watt (MHP, HPS)

17 = 175 Watt (MH, MHP)

20 = 200 Watt (MHP)

25 = 250 Watt (MH, MHP, HPS)

32 = 320 Watt (MHP)

35 = 350 Watt (MHP)

40 = 400 Watt (MH, MHP, HPS)

100 = 1000 Watt (MH, HPS)

4 **Voltage***

0 = Quad - 120, 208, 240, 277V - 60Hz

5 = 480V

6 = Tri - 120, 277, 347V (for Canada only)

7 = 220V 60Hz

8 = 220/240V 50 Hz

5 **- 76 Series Constant (7 x 6 optic pattern)**

6 **Options**

• NR - Ex nR Restricted Breathing (Ex nR II)

• IR - Instant Restrike 150W HPS**

• BP - 150 - 400 HPS**

• Fuse option 400W max. (not for Marine or CSA)

F1 single 120V F5 double 480V

F2 double 208V F6 single 347V

F3 double 240V F7 double 220V

F4 single 277V F8 single 230V 50Hz

• Photocell option (400W max.)

P1 120V P1 208-277V P1 347V

• Terminal Blocks

TBx x=1-8 x = voltage code

TBLx Lx=1-8 looping x = voltage code

• Lamps

AS = Assembled Standard Lamp

AD = Assembled Dual-Arc-Tube Lamp; 150, 250, 400HPS only

* Not all voltage/lamp combinations available - consult factory

** IR & BP cannot be ordered together

HPS, MH, Ordering Information

Catalog Number	Lamp and Wattage	Volts ^④	Beam Spread H° X V°
KFS150-76 KFS155-76	150 HPS	QUAD 480	7 (144°) X 6 (113°)
KFS250-76 KFS255-76	250 HPS	QUAD 480	7 (144°) X 6 (113°)
KFS400-76 KFS405-76	400 HPS	QUAD 480	7 (144°) X 6 (113°)
KFS1000-76 KFS1005-76	1000 HPS ⑤⑥	QUAD 480	7 (130°) X 6 (114°)
EXP ORT ONLY	KFH170-76 KFH175-76	170 MH 480	QUAD 480 7 (145°) X 6 (114°)
	KFH250-76 KFH255-76	250 MH 480	QUAD 480 7 (145°) X 6 (114°)
EXP ORT ONLY	KFH400-76 KFH405-76	400 MH 480	QUAD 480 7 (146°) X 6 (119°)
	KFH1000-76 KFH1005-76	1000 MH ⑤⑦ 480	QUAD 480 7 (118°) X 6 (112°)

MH, Pulse Start Ordering Information

Catalog Number	Lamp and Wattage	Volts ^④	Beam Spread H° X V°
KFP150-76 KFP155-76	150 MHP	QUAD 480	7 (145°) X 6 (114°)
KFP170-76 KFP175-76	175 MHP	QUAD 480	7 (145°) X 6 (114°)
KFP200-76 KFP205-76	200 MHP	QUAD 480	7 (145°) X 6 (114°)
KFP250-76 KFP255-76	250 MHP	QUAD 480	7 (145°) X 6 (114°)
KFP320-76 KFP325-76	320 MHP	QUAD 480	7 (146°) X 6 (119°)
KFP350-76 KFP355-76	350 MHP	QUAD 480	7 (146°) X 6 (119°)
KFP400-76 KFP405-76	400 MHP	QUAD 480	7 (146°) X 6 (119°)